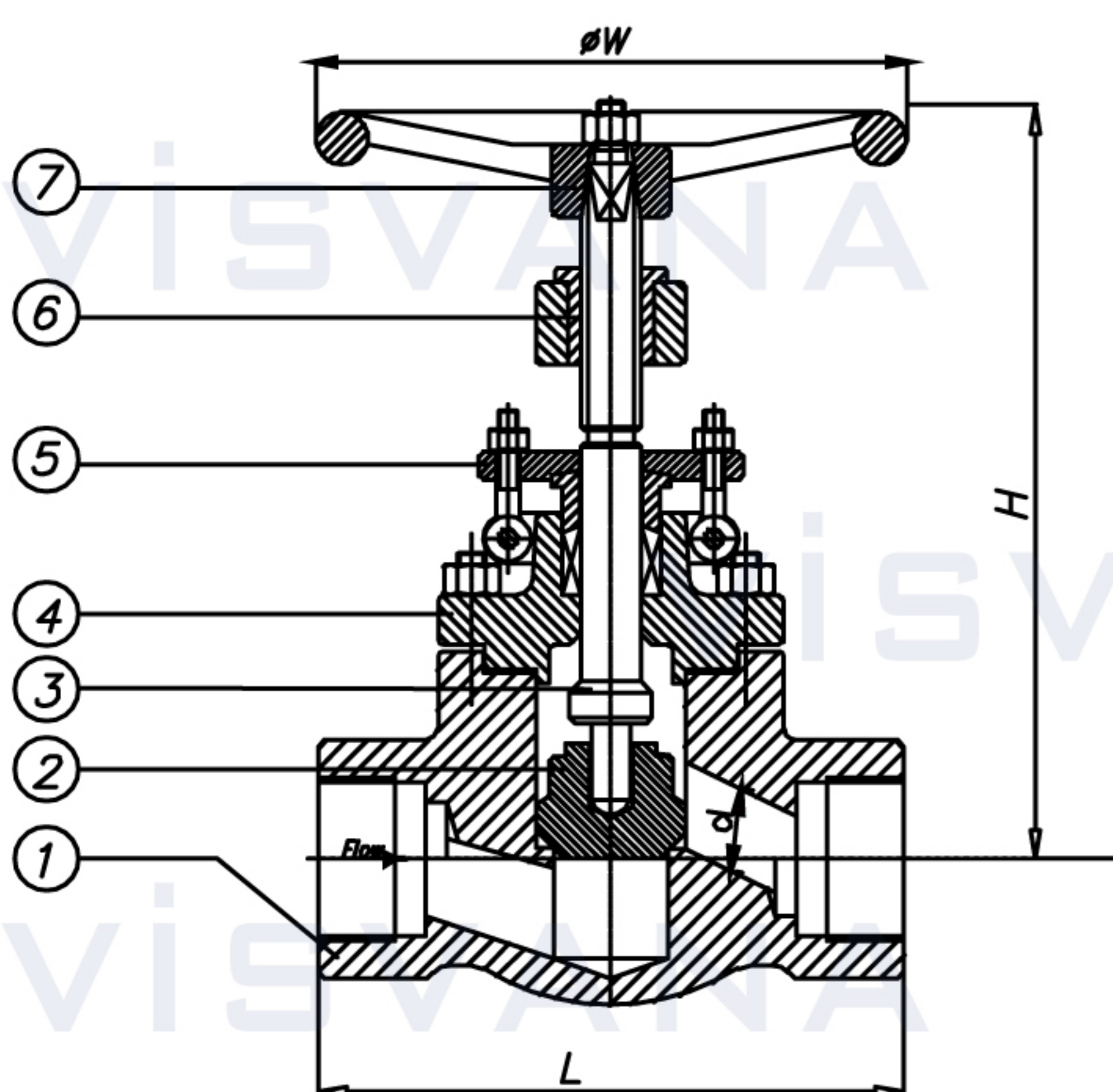
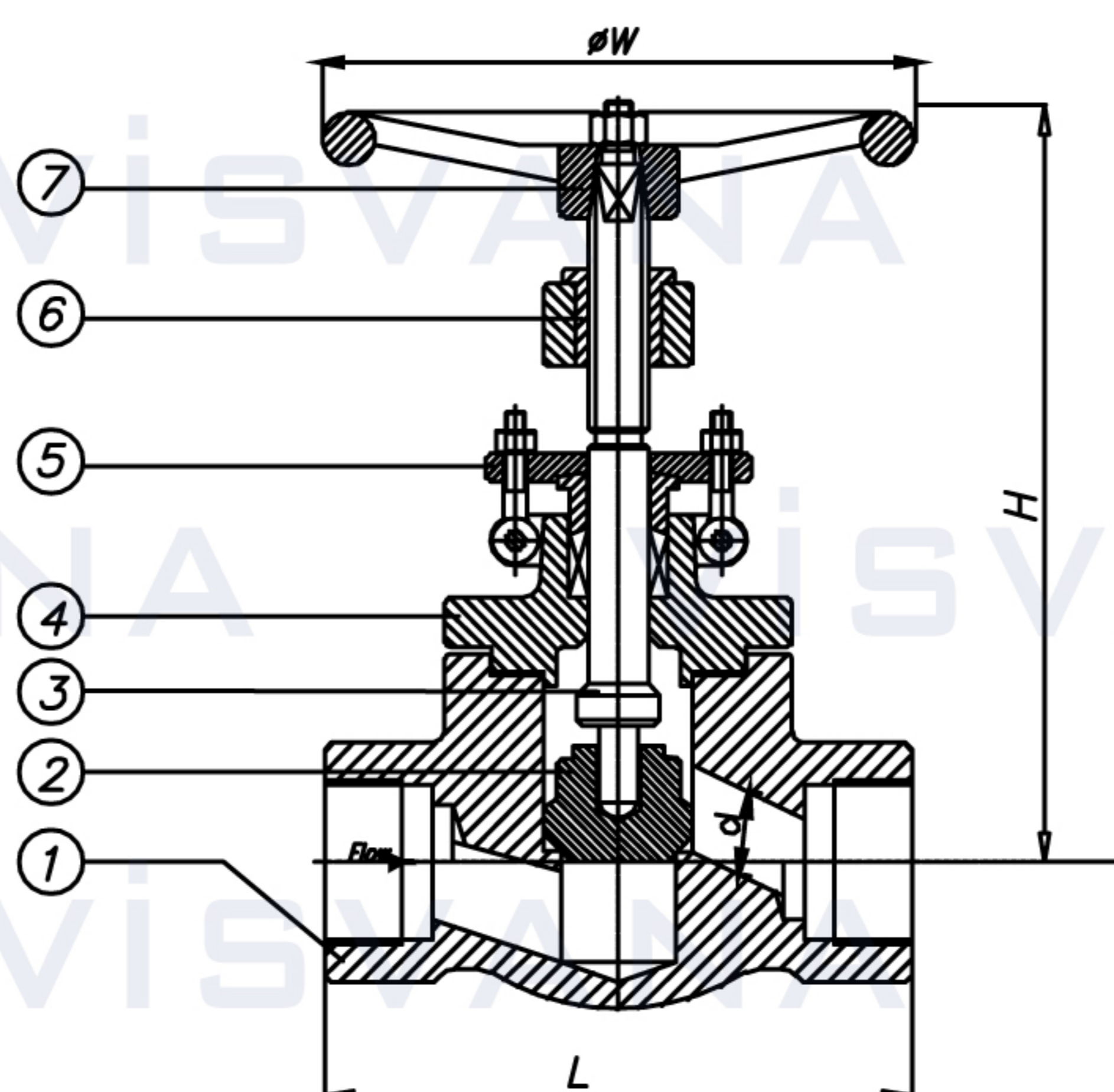


API FORGED STEEL GLOBE VALVE

VDBS-800 / VDBS-900
VDBS-1500 / VDBS-2500



Welded Bonnet
Socket-welding End



Bolted Bonnet
Socket-welding End



Standards

Design and Manufacture	API 602
Inspection and Test	API 598
Socket-weld dimension	ASME B16.11
End threads dimension	ASME B1.20.1
Pressure-temperature ratings	ASME B16.34

Part Name		Material		
1	Body	ASTM A105	ASTM A182F304	ASTM A182F316
2	Disc	ASTM A105	ASTM A182F304	ASTM A182F316
3	Stem	ASTM A182F6	ASTM A182F304	ASTM A182F316
4	Bonnet	ASTM A105	ASTM A182F304	ASTM A182F316
5	Gland Flange	ASTM A105	ASTM A182F304	ASTM A182F316
6	Stem Nut	ASTM A276410		
7	Handwheel	ASTM A197		

Class 150 & Class 1500 Forged Globe Valve

Class	Size		Dimensions (mm)				NPT	Weight (Kg)
	NPS	DN	L	d	H	W		
150 - 800	1/2"	15	79	10	158	100	1/2"	2.0
	3/4"	20	92	13	158	100	3/4"	2.2
	1"	25	111	17.5	192	125	1"	2.5
	1 1/4"	32	120	23	227	160	1 1/4"	5.5
	1 1/2"	40	152	28.5	240	160	1 1/2"	7.0
	2"	50	172	35	279	180	2"	11.5
900 - 1500	1/2"	15	92	10	187	125	1/2"	3.5
	3/4"	20	111	13	187	125	3/4"	4.0
	1"	25	120	17.5	227	160	1"	6.3
	1 1/4"	32	152	23	242	160	1 1/4"	8.0
	1 1/2"	40	172	28.5	278	180	1 1/2"	12.5
	2"	50	220	35	325	200	2"	19.5
2500	1/2"	15	150	11	293	160	1/2"	10.8
	3/4"	20	150	11	293	160	3/4"	12.0
	1"	25	170	14	344	200	1"	13.5
	1 1/4"	32	200	16	383	250	1 1/4"	18.5
	1 1/2"	40	200	25	383	250	1 1/2"	22.0
	2"	50	250	28	442	300	2"	37.0