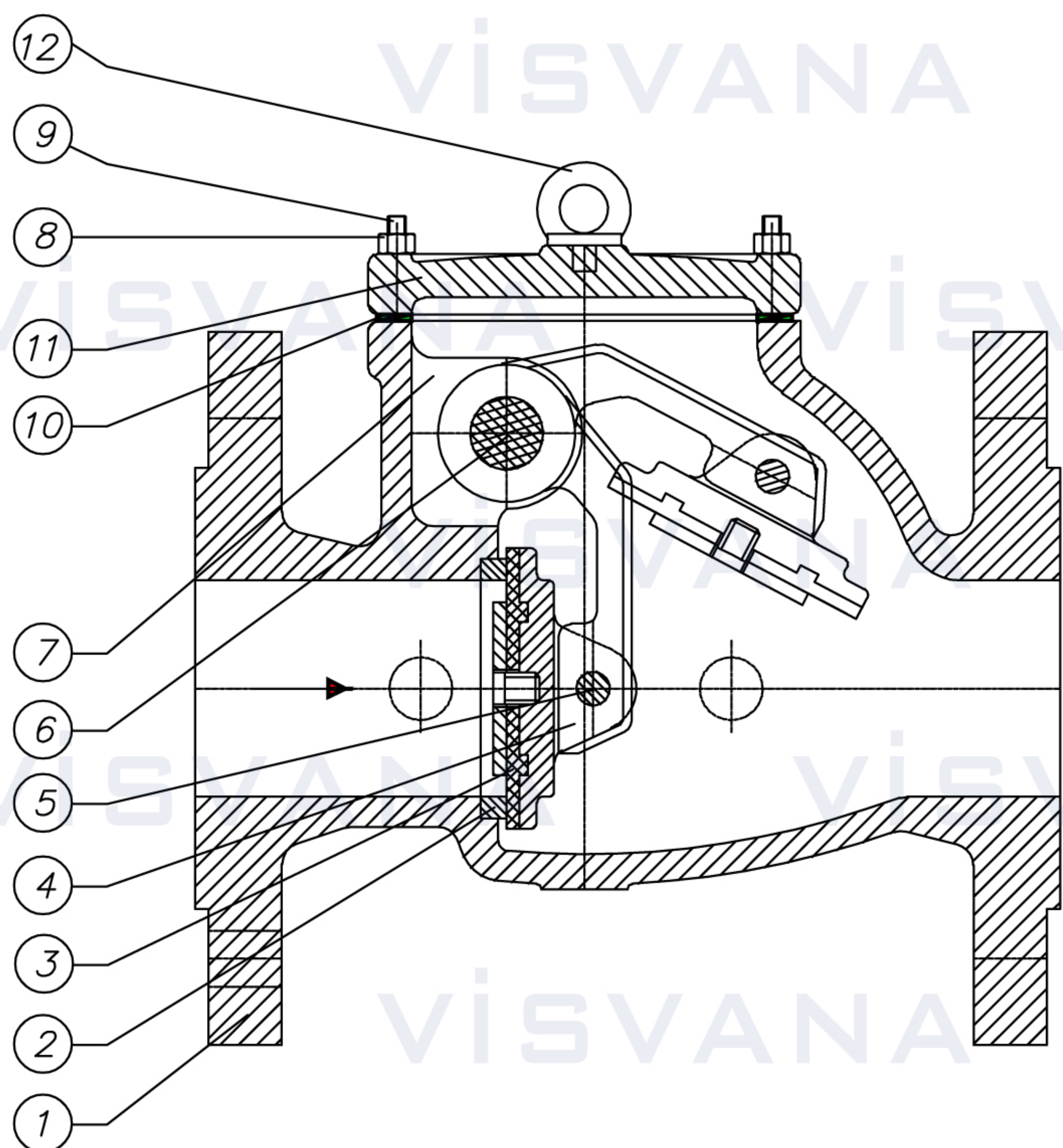


API SWING CHECK VALVE



STANDARD MATERIAL To API 600

Trim Code	Seat Ring Surface Part No.2	Disc Surface Part No.3	Hing pin Part No.6
1	F6	F6	F6
2	F304	F304	F304
5	Stellite	Stellite	F6
8	Stellite	F6	F6
9	Monel	Monel	Monel
10	F316	F316	F316
13	Alloy 20	Alloy 20	Alloy 2

Standards

Design and Manufacture	BS 1868-1873,ASME B16.34,API6D
Inspection and Test	API598,API6D
End Falnge dimension	ASME B16.5
End Falnge dimension	ASME B16.47A MSS SP-44
End Falnge dimension	ASME B16.47B API605
BW end dimension	ASME B16.25
Face to face	ASME B16.10
Pressure-temperature ratings	ASME B16.34
Wall thickness dimension	API600 and BS 1868

Standard Material Specifications

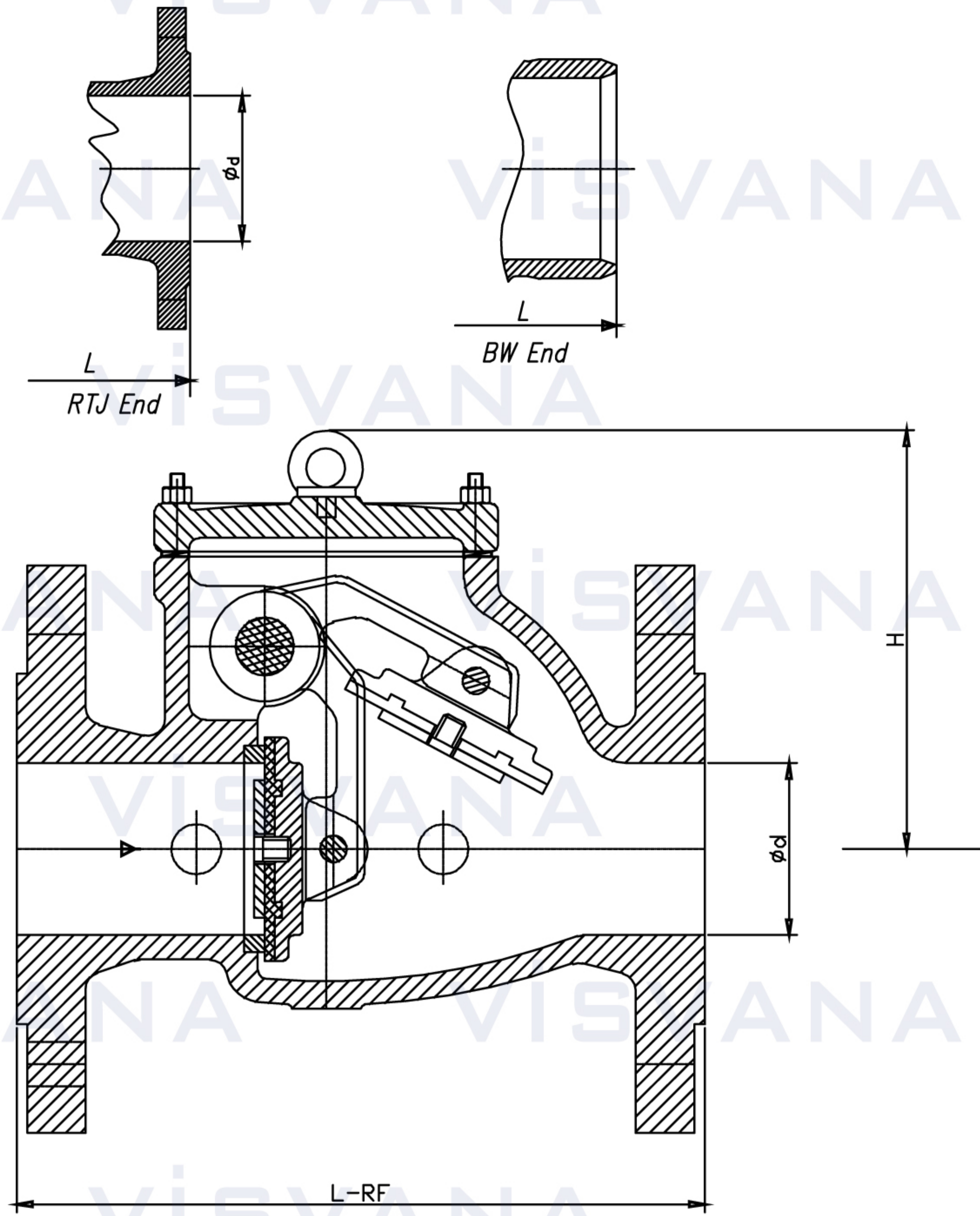
Parts name		Carbon steel to ASTM		Alloy Steel to ASTM				Stainless Steel to ASTM			
1	Body	A216WCB	A352 LCB	A217 WC1	A217 WC6	A217 WC9	A217 C5	A351 CF8	A351 CF8M	A351 CF3	A351 CF3M
11	Cover	A216 WCB	A352 LCB	A217 WC1	A217 WC6	A217 WC9	A217 C5	A351 CF8	A351 CF8M	A351 CF3	A351 CF3M
3	Disc	A216 WCB	A352 LCB	A217 WC1	A217 WC6	A217 WC9	A217 C5	A351 CF8	A351 CF8M	A351 CF3	A351 CF3M
4	Hinge	A216 WCB	A352 LCB	A217 WC1	A217 WC6	A217 WC9	A217 C5	A351 CF8	A351 CF8M	A351 CF3	A351 CF3M
9	Bolt	A193 B7	A320 L7	A193 B7	A193 B16	A193 B16	A193 B16	A193 B8	A193 B8	A193 B8	A193 B8
8	Nut	A194 2H	A194 4	A194 2H	A194 4	A194 4	A194 4	A194 8	A194 8	A194 8	A194 8
5	Disc Nut	A194 2H	410	410	410	410	410	304	316	304L	316L
10	Gasket	SS Spiral Wound W/graphite, or SS Spiral Wound W/PTFE, of Reinforced PTFE									
12	Eye Bolt	Steel									
7	Yoke	A216 WCB	A352 LCB	A217 WC1	A217 WC6	A217 WC9	A217 C5	A351 CF8	A351 CF8M	A351 CF3	A351 CF3M

Noted: The chart above only lists out some common composition of steel globe valve parts. We may provide other differend parts material composition according to the customer' s request or the actual valve working condition.



VCS-C150 VCS-C300

API SWING CHECK VALVE



Class 150 & Class 300 Swing Check Valve

Size		Class 150 Dimensions (mm)						Class 300 Dimensions (mm)					
NPS	DN	L			d	H	Weight (Kg)	L			d	H	Weight (Kg)
		RF	RTJ	BW				RF	RTJ	BW			
2	50	203	216	203	51	138	14	267	283	267	51	150	22
2 1/2	65	216	229	216	64	160	19	292	308	292	64	178	35
3	80	241	254	241	76	172	24	318	333	318	76	223	44
4	100	292	305	292	102	245	43	356	371	356	102	255	57
5	125	330	343	330	127	260	59	400	416	400	127	280	80
6	150	356	368	356	152	280	72	445	460	445	152	310	120
8	200	495	508	495	203	347	124	533	549	533	203	355	194
10	250	622	635	622	254	390	196	622	638	622	254	445	290
12	300	699	711	699	305	435	330	711	727	711	305	485	450
14	350	787	800	787	337	465	417	838	854	838	337	515	587
16	400	864	876	864	387	525	503	864	879	864	387	560	761
18	450	978	991	978	438	580	630	978	994	978	432	620	1030
20	500	978	991	978	489	615	791	1016	1035	1016	483	685	1191
24	600	1295	1308	1295	591	710	960	1346	1368	1346	584	760	1892
26	650	1295		1295	633	840	1250	1346	1372	1346	633	850	2300
28	700	1448		1448	684	920	1580	1499	1524	1499	684	920	2600
30	750	1524		1524	735	980	1950	1594	1619	1594	735	1150	3200
32	800	1727		1727	779	1016	2800	1727		1727	779	1260	3700
36	900	1956		1956	874	1092	3200	2083		2083	874	1390	4300